



IFHE 2018
BRISBANE, AUSTRALIA



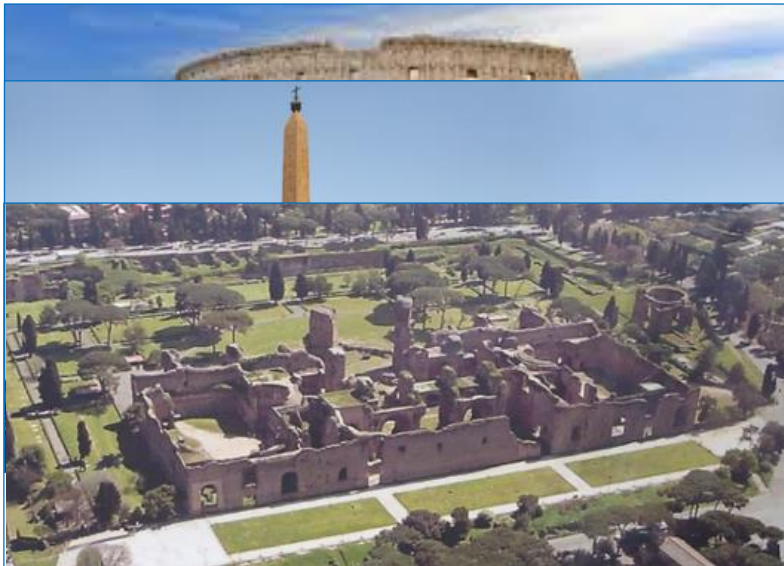
6-11 OCTOBER 2018
BRISBANE CONVENTION
& EXHIBITION CENTRE

**MODERN CHALLENGES IN HOSPITALS WITH
ANCIENT FOUNDATIONS:
INSTALLING LINACCS AND SOLAR PV IN THE UNESCO
PROTECTED AREA
SAN GIOVANNI ADDOLORATA HOSPITAL, ROME**





SAN GIOVANNI ADDOLORATA HOSPITAL

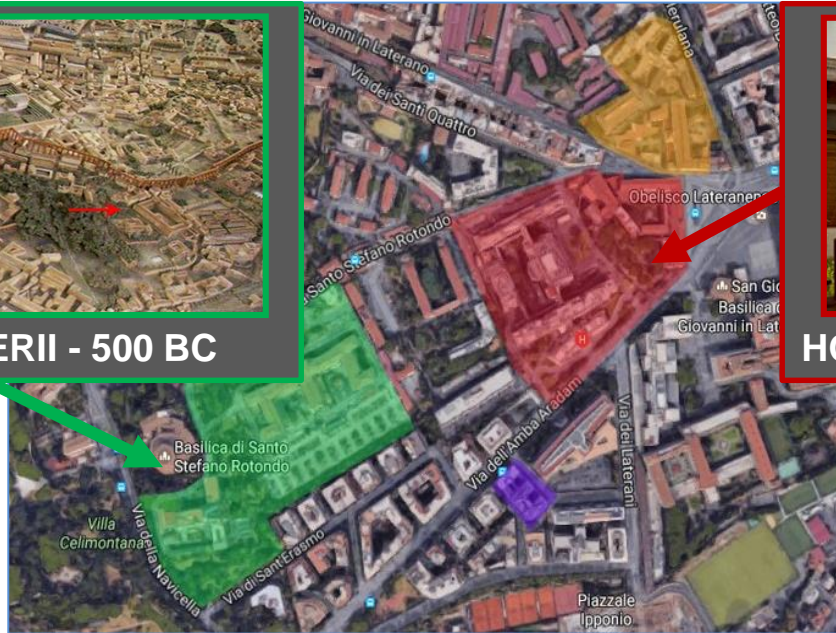




SAN GIOVANNI ADDOLORATA HOSPITAL



DOMUS VALERII - 500 BC



HORTI DOMIZIA LUCILLA - 150 AD

| | |
|--|-------------------------|
| | ADDOLORATA - BRITANNICO |
| | SAN GIOVANNI |
| | S. MARIA |
| | AMMINISTRAZIONE |

HISTORIC URBAN LANDSCAPE



IFHE 2018
BRISBANE, AUSTRALIA



6-11 OCTOBER 2018
BRISBANE CONVENTION
& EXHIBITION CENTRE

SAN GIOVANNI ADDOLORATA HOSPITAL



HISTORIC URBAN LANDSCAPE

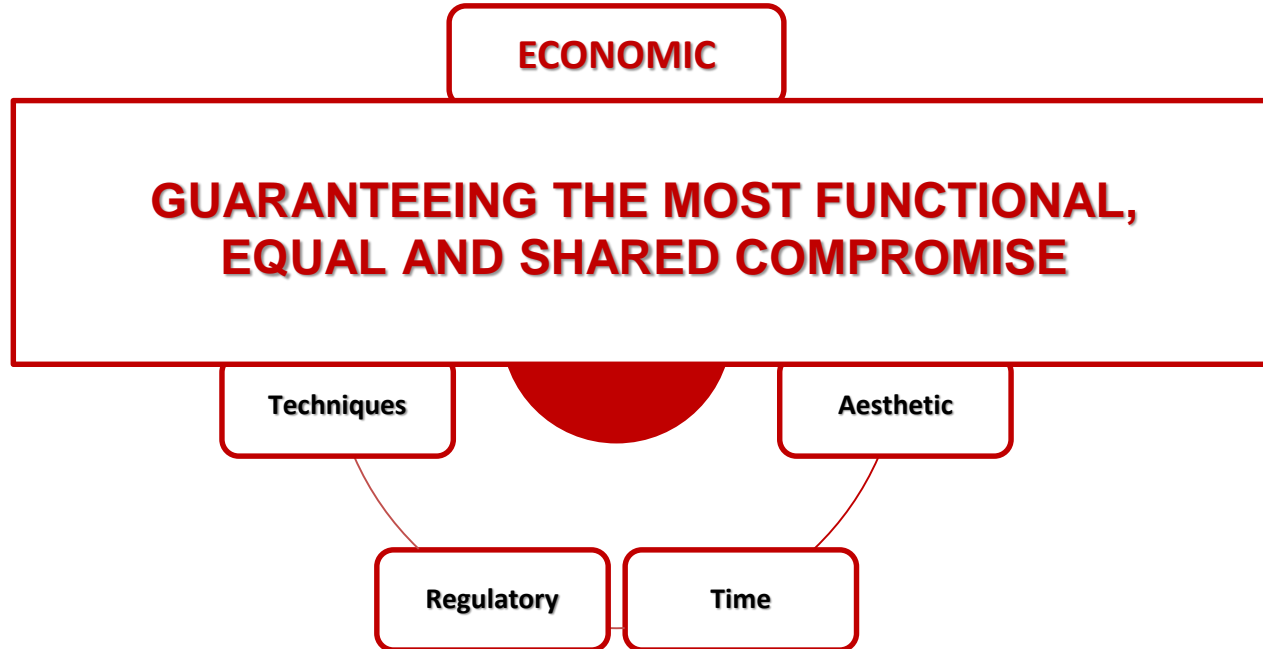
THE CHALLENGE

**HISTORICAL AND
ARCHAEOLOGICAL
HERITAGE**

**HEALTHCARE
TECHNOLOGIES
FOR CITIZENS**



IDENTIFICATION OF STAKEHOLDERS



INSTITUTIONAL STAKEHOLDERS

- ❑ COMPANY MANAGEMENT
- ❑ REGIONAL MANAGEMENT

- ❑ NATIONAL SUPERINTENDENCIES
- ❑ MUNICIPAL SUPERINTENDENCIES

- ❑ TECHNICAL TASK FORCE

OPERATIONAL TOOLS

MANAGEMENT PLAN OF THE UNESCO WORLD HERITAGE SITE:

- ❑ Code of Cultural Heritage and Landscape
- ❑ The Territorial Plan
- ❑ Regional Landscape Territorial Plan

PRIVATE STAKEHOLDERS

- ❑ ASSOCIATIONS
- ❑ PRESS
- ❑ PUBLIC OPINION
- ❑ COMMITTEES OF CITIZENS



**TRANSPARENCY
AND INFORMATION**

THE TECHNICAL OPERATIONAL TOOLS

- 1** The most modern technologies and non-standardized solutions to fit into the historical heritage without trauma
- 2** A recovery and conservation activity of historical heritage when a harmonious and safe coexistence with innovation becomes impossible



IFHE 2018
BRISBANE, AUSTRALIA



6-11 OCTOBER 2018
BRISBANE CONVENTION
& EXHIBITION CENTRE

TWO EXAMPLES OF REALIZATION IMPLEMENTED AT THE P.O. DELL'ADDOLORATA





RECOVERY OF ARCHAEOLOGICAL HERITAGE



EXCAVATION WORKS

MOSAIC FLOOR, MARBLE WALLS
AND PAINTINGS

ADVANCED RESTORATION TECHNIQUES
TO HOUSE TWO LINEAR ACCELERATORS



RECOVERY OF ARCHAEOLOGICAL HERITAGE



BEFORE



AFTER



THE PHOTOVOLTAIC SYSTEM

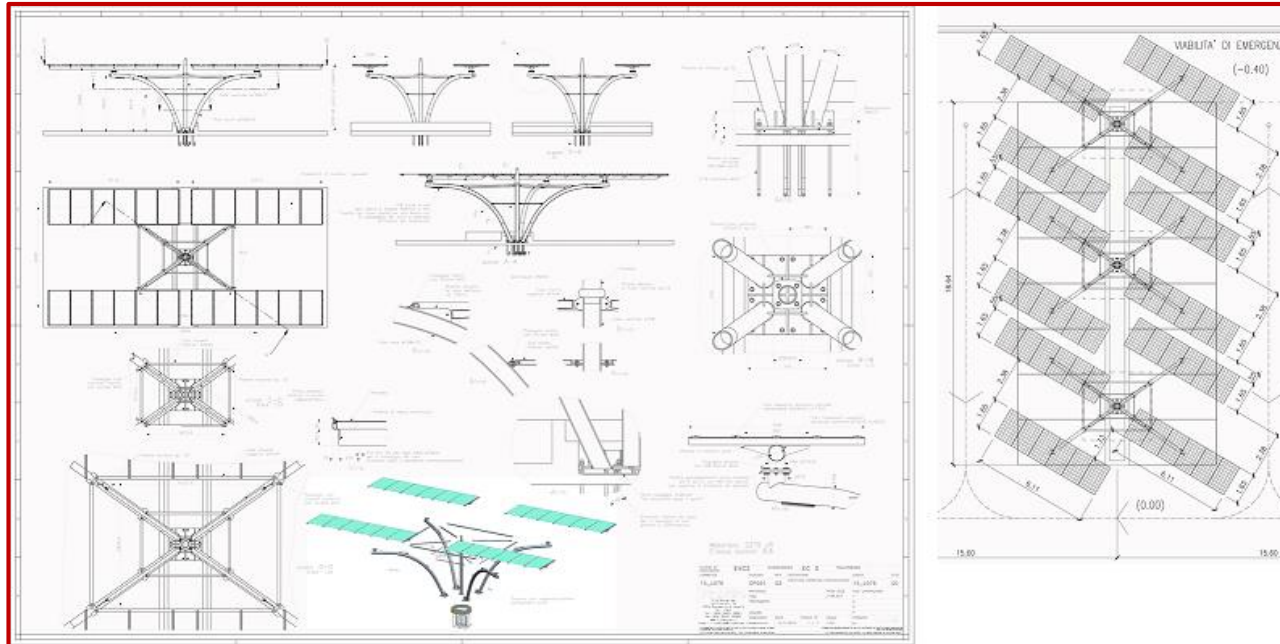


DESIGN ANALYSIS CONDUCTED WITH THE SUPERINTENDENCY





THE PHOTOVOLTAIC SYSTEM



HANDCRAFTED TREE SHAPED STEEL STRUCTURES

THE PHOTOVOLTAIC SYSTEM

URBAN DESIGN BACKSTAGE





THE PHOTOVOLTAIC SYSTEM



COMMON PANEL STRUCTURE



INSERTION OF MODERN TECHNOLOGIES IN THE
HISTORICAL ARCHITECTURAL CONTEXT BOUND
BY REGULATIONS



THE PHOTOVOLTAIC SYSTEM



THE PHOTOVOLTAIC SYSTEM



BEFORE



AFTER

RESULTS

- ❑ 33 POLES
- ❑ 792 PANELS
- ❑ 1306 m2
PHOTOVOLTAIC
PANEL AREA

A PLANT OF 200KWP

GENERATES

❑ 214.204 kWh ANNUAL ENERGY

❑ 107.000 KG CO2 LESS EMISSIONS -

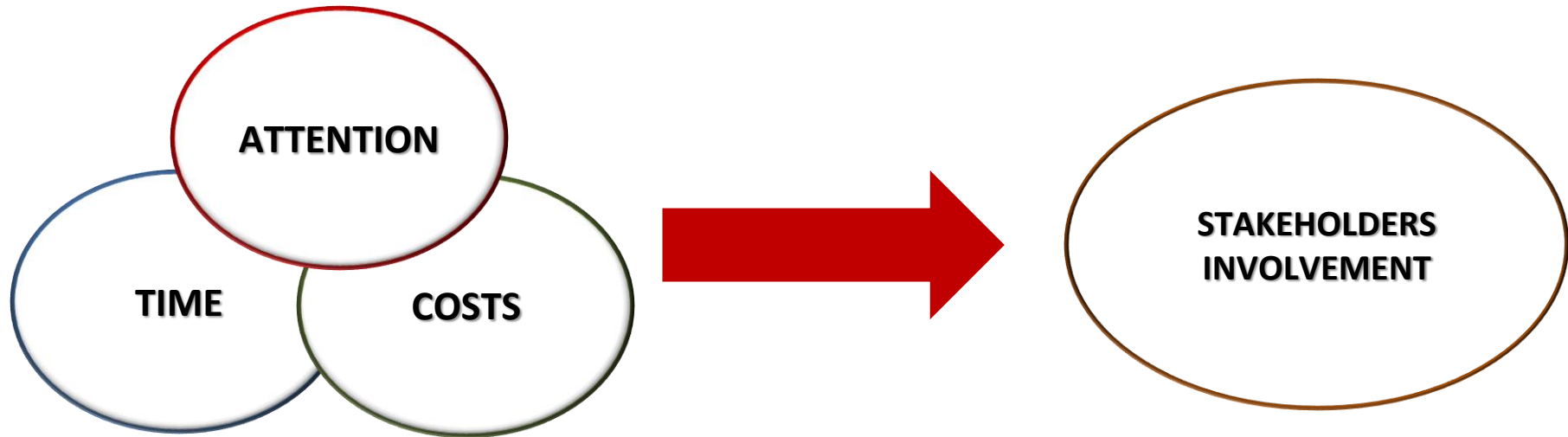
1

• **POWERS A LARGE PART OF THE DISTRICT ITSELF**

2

• **THE FIRST EXAMPLE OF A PHOTOVOLTAIC SYSTEM WITHIN THE HISTORIC CENTER OF ROME**

FINAL CONSIDERATIONS



**EVER-INCREASING TECHNOLOGICAL DEVELOPMENT THAT
RESPECTS OUR CULTURE, OUR PAST AND OUR ENVIRONMENT**



IFHE 2018
BRISBANE, AUSTRALIA



6-11 OCTOBER 2018
BRISBANE CONVENTION
& EXHIBITION CENTRE

MODERN CHALLENGES WILL BE WON

Thanks for your attention

grazie

